



Over 200 shops

### Welcome Shops

Restaurants, stores, sightseeing attractions, accommodations and other establishments displaying this sticker offer accessible services for overseas guests. Keep your eyes peeled!



Welcome Shops are marked by this sticker.

Approximately 300 locations

### Ota City Tourist Information Spots

Stores and accommodations that distribute sightseeing maps and pamphlets, and offer visitors information on local sights and attractions.



Ota City Tourist Information Spots are marked by this sticker

Learn more!

### OTA CITY Official Travel Guide



OTA CITY

Discover authentic Japan

<http://ota-tokyo.com/>



Recent news

Recommended routes

Hotels and accommodations

Restaurants

Events

Emergency information

Delivering the today of Ota City!

visit ota city



Free public Wi-Fi

[ OTA CITY FREE Wi-Fi ]



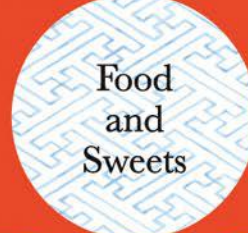
Public Wi-Fi spots and internet access is available for overseas visitors in locations throughout Ota City, to help visitors learn more about the city's many highlights. Access is available for all, free of charge.

## Shopping



### Welcome to ATRE OMORI.

From shopping to fine dining, enjoy your day !



## Food and Sweets



## Beauty Care and Services

### ATRE OMORI

<http://www.atre.co.jp/store/omori>

TEL.03-3763-3351 (reception)

Operating hours: 1F-4F 10:00 am-9:00 pm; 5F restaurants 11:00 am-11:00 pm

\*Operating hours may differ for individual shops.

きらめく街、  
ときめく暮らしの、  
はじまりに。

atré  
OMORI

Advertisement

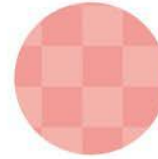
TAKE  
FREE

# TOKYO

# OTA CITY

## GUIDE BOOK

Discover authentic Japan







# Welcome to OtaCity



## The gateway to Tokyo, where traditional Japan awaits

Ota City, which is home to Haneda Airport, features a wide range of Japanese scenery. Historical Shinto shrines and Buddhist temples, traditional market streets and "sento" (public baths) where visitors experience Japanese life, parks with soothing greenery and water features, workshops featuring world-renowned craftsmanship, and more... Step outside the airport and hunt for Japanese tradition and custom in Ota City!



**Hanepyon**



Gateway to the sky  
Haneda Airport

## 01 | Observation decks G-5 H-5

The three observation decks within the airport are each located in different areas and face different directions, offering unique scenery with views of SkyTree, Tokyo Bay and the Kawasaki industrial zones. The nighttime views are particularly breathtaking.

- 6:30~22:00
- International Terminal is open 24H
- Terminal 1 6F and rooftop
- Terminal 2 5F
- International Terminal 5F
- \*Subject to change due to weather

See Mt. Fuji from the Terminal 1  
Observation Deck

## 04 | EDO MARKET PLACE G-5

Old Edo and Yamato townscapes come to life on the airport's Edo Alley floor. Includes approximately 40 popular Japanese stores and dining establishments.

- Haneda Airport International Terminal



©TIAT

05 | Planetarium G-5  
Starry Café

Enjoy food and drinks while gazing at the beautiful twinkling stars projected across the entirety of the domed roof.

- 03-6428-0694
- Open hours: 7:00-23:00
- Screening times 11:00~17:00, 17:30~23:00
- Adults (middle-school age and older): ¥520/Children (2 and older): ¥310
- \*One-drink minimum charged separately
- Haneda Airport International Terminal 5F



©TIAT



## 02 | Marketplace H-5

Enjoy a genuine shopping experience at the many speciality shops located within the airport.

- Haneda Airport Terminal 1

Cappuccino from Yojiya Cafe▶



## 03 | Discovery Museum H-5

Features a variety of exhibits related to Japanese history and culture. Relax on the museum sofas as you appreciate these works of art.

- 03-6428-8735
- 11:00-18:30 (entry closes at 18:00)
- Sat./Sun./holidays: 10:00-18:30 (entry closes at 18:00)
- Terminal 2 3F

06 | Hakuinkan Toy Park G-5  
Haneda Airport Branch

Offers an airport-exclusive lineup of goods, including one of Japan's largest slot car kits (with approximately 50 m of track), models of airplanes from across the world, and a variety of flag keyholders.

- 03-6428-0300
- 9:00~22:00
- Open year round
- Haneda Airport International Terminal 5F



Buy it  
at Haneda  
Airport!

## Fun vending and capsule machines

Japan is home to a rich variety of vending machines. Why not convert your loose change to interesting toys and goods before returning home?

Tokyo figurine  
capsule machines

With figurines of the capital building, sumo wrestlers and more!



©TIAT

Wooden kifuda also  
available for purchase!

You can write a wish on the plane ticket-shaped wooden votives (kifuda) and hang them at the shrine, or bring them home with you as a souvenir.



A temple with over 700 years of history  
Ikegami Honmonji Temple



Five-story Pagoda



Tahoto(Stupa)

C-3

## 07 | Ikegami Honmonji Temple

The head temple of the Nichiren Shu Order, with over 700 years of history. The peaceful and sprawling temple grounds abound with classical Japanese architecture, including the five-story pagoda (said to be the oldest in Kanto) and the two-story Tahoto(Stupa). The cherry blossoms in spring are magnificent.

- ☎ 03-3752-2331
- 📍 Grounds open to public
- 🚶 10 min. walk from Ikegami Station on the Tokyo Ikegami Line  
12 min. walk from Nishimagome Station on the Toei Asakusa Line
- 📍 1-1-1 Ikegami, Ota-ku



### a: Nio-mon

The Nio-mon gate standing before the great hall was reconstructed in 1977. Two guardian deities protect the gate from each side.

### b: Oeshiki

A memorial service is held on October 13 to honor the anniversary of the sage Nichiren's death. On the night of the 12th adherents carrying Buddhist lanterns hold a beautiful procession at the temple.



### c: Ikegami Ikedaya

- ☎ 03-3751-0154
- 🕒 10:00~17:00
- 🗓 Wednesday
- 📍 4-24-1 Ikegami, Ota-ku

#### From Ikegami to the world! Kuzu mochi

One of Japan's many traditional sweets. Wheat flour starch is fermented, steamed, served with concentrated brown sugar syrup and heftily sprinkling of roasted soy bean flour.







## Near Haneda Airport

### 08 | Anamori Inari-jinja Shrine F-5

A variety of fox gods are worshipped at this shrine, which is said to bring good fortune with money, business prosperity and safe travels. Visitors to the shrine can also see a torii corridor, with multiple torii (shrine archways) lined up to form a tunnel.

- ☎ 03-3741-0809 🕒 8:30~17:00
- ➡ 3 min. walk from Anamori Inari Station on the Keikyu Airport Line
- 📍 5-2-7 Haneda, Ota-ku

#### Inari foxes

Foxes, which eat the rice and rodents that lay waste to fields, are believed to be the servants of Inari, the harvest god.



A charm for safe travels

### 09 | Haneda-jinja Shrine E-5

Built approximately 800 years ago, this shrine was so central to belief during the Edo Period (1603-1868) that it was frequented by the shogun. In modern times it is often visited by airline workers who come to pray for safe flight operations.

- ☎ 03-3741-0023
- ➡ 10 min. walk from Otorii Station on the Keikyu Airport Line
- 📍 3-9-12 Hon-Haneda, Ota-ku

#### Ema (Shinto votive)

These votives, featuring an image of an aircraft and torii archway, are inscribed with a prayer for safe travels.



## Along Tama River

### 10 | Tamagawa Sengen-jinja Shrine A-3

Built over 800 years ago, the goddess of Mt. Fuji, Konohananosakuya-hime, is deified at this shrine. The view of Mt. Fuji and the Tama River is exquisite.

- ☎ 03-3721-4050
- ➡ 3 min. walk from Tamagawa Station on the Tokyu Toyoko and Tamagawa lines.
- 📍 1-55-12 Den-enchofu, Ota-ku

#### Ema (Shinto votive)

These votives feature an image of the cherry blossoms associated with Konohananosakuya-hime.



### 11 | Nitta-jinja Shrine C-4

Yoshiaki Nitta, a commander from the Nanboku-cho period, is enshrined here as a god of luck. This is also where the Hamaya (a ceremonial arrow used as a traditional New Year's decoration) originated. The temple grounds are unusual in that they feature modern art.

- ☎ 03-3758-1397
- ➡ 5 min. walk from Musashinitta on the Tokyu Tamagawa line.
- 📍 1-21-23 Yaguchi, Ota-ku

#### Hamaya



## Near Senzokuike Pond

### 12 | Senzoku Hachiman-jinja Shrine C-1

Located on the banks of Senzokuike Pond, Emperor Oujin and a variety of other gods are worshipped at this shrine, which was built over 1,100 years ago. In particular, it is home to gods once worshipped by the samurai for good fortune in battle, and is even linked to the story of General Minamoto no Yoritomo's favorite steed, Ikazuki.

- ☎ 03-3727-7584
- ➡ 10 min. walk from Senzokuike Station on the Tokyu Ikegami Line
- 📍 2-23-10 Minami-Senzoku, Ota-ku



## Kamata Area

### 13 | Kamata Hachiman-jinja Shrine D-4

Although close to the station, the thick-growing trees lend an atmosphere of holiness. While the exact year of construction is unknown, the burial mound located on the grounds indicate the location has been considered sacred since long ago. The cherry blossoms in spring are beautiful.

- ☎ 03-3731-5216
- ➡ 3 min. walk from Keikyu Kamata Station on the Keikyu Line
- 📍 4-18-18 Kamata, Ota-ku





## Umeshiki Area



Iseya Mochigashi  
(Japanese sweets)

Meat Shop Yukiya  
(side dishes)



### Korokke

Japanese croquettes consists of grated potatoes coated in a layer of flour and deep-fried. A variety of flavors are available, such as beef or vegetable croquettes.



Many other shopping streets (shotengai) can also be found in Ota City

## Kojiya Area

Shopping Streets rich in local spirit



Aikawayama  
Kamabokoten

Kojiya Sta.

Keikyu  
Airport Line  
Niku no  
Otaya

How to enjoy a shotengai  
(Shopping street)



### Kakiage

Kakiage is a type of deep-fried tempura consisting of finely sliced nests of seafood and vegetables.



Sumiyaki Hakkai  
(yakitori)

Okoshi  
(side dishes)

### Yakitori

Skewered and grilled chicken. Each yakitori shop has their own special recipe of sauces and seasonings. One of the most popular everyday foods in Japan, with varieties ranging from thigh meat and chicken skins and innards.



Yatsumeya  
Matsumoto  
(eel)

Cheik Dor  
(cakes/pastries)



Yomesushi  
(sushi)



Umeshiki Sta.

## Heiwajima Area

This shotengai retains vestiges of the old Tokaido Road.



Ajisai  
(side dishes)

Mochijin  
(Japanese sweets)

Omorumachi  
Sta.



## Zoshiki Area

Ota City's largest, most bustling shotengai.



Niku no  
Mizoguchi

Niku no  
Inose



Discover delicious food and drinks!  
An old-time yokocho alley lined with pubs and taverns.

## Bourbon Road

### Upper House Kamata

P22  
B-1

This pub is known for the authentic, British-style fish and chips, which are said to be some of the best in Tokyo.

- ☎ 03-3737-0016
- ☎ Mon.-Thu.: 17:00-24:00 (L.O. 23:00)  
Fri./Eve of Nat'l holidays: 17:00-26:00 (L.O. 25:00) Sat.: 14:00-26:00 (L.O. 25:00)  
Sun./Holidays: 14:00-24:00 (L.O. 23:00)
- ☎ Kamata Tokyo Plaza Annex 1F (inside Kuidaore Yokochi)
- ☎ 7-69-1 Nishi-Kamata, Ota-ku



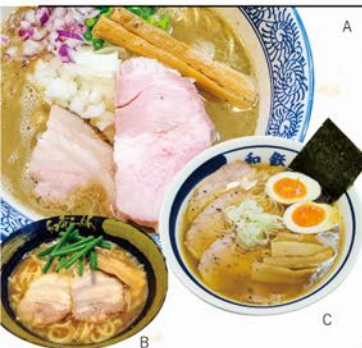
### Yakiton Butabanchō

P22  
B-1

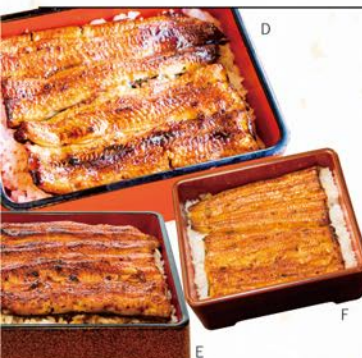
A laidback pub with an at-home, Showa-era feel.

- ☎ 03-3739-7058
- ☎ Weekdays: 16:00-24:00 (L.O. 23:00)  
Sat./Sun./Holidays: 14:00-23:00 (L.O. 22:30)
- ☎ Open year round
- ☎ 7-63-6 Nishi-Kamata, Ota-ku





Originating in China, Japan has evolved its own distinct take on ramen noodle soup, with countless variations of noodles, soup flavors and toppings.



Unagi is a Japanese dish consisting of split eel basted in a sweet and spicy sauce, char-coal grilled, and served over rice. The teriyaki-style sauce goes perfectly with the rice.

### Hidamari Café

☎ 03-6715-7711  
☎ 11:30~14:00, 17:00~21:00  
☒ Mon., Sun./holidays  
☒ Kamata Copo 2  
4-31-1 Kamata, Ota-ku



P23 C-2

### phono kafe

☎ 03-6428-6392  
☎ 11:30~19:30  
☒ Tue., Wed., Thu.  
☒ Miyazawa Building 1F,  
5-11-1 Nishi-Kamata,  
Ota-ku



P22 B-1

### Hanuman

☎ 03-3751-8488  
☎ 11:00~15:00, 17:00~23:30  
☒ Open year round  
☒ 4-31-18 Ikegami,  
Ota-ku



P24 A

### Rosni

☎ 03-5700-1556  
☎ 11:00~15:00, 17:00~23:00  
(11:00-23:00 on Sat./Sun./holidays)  
☒ 1st and 3rd Thr. of every month  
☒ Raturu Building 1F, 6-5-9 Ikegami, Ota-ku



P24 A

## Tonkatsu

### G. Tonkatsu Jinenbo

P24 E

☎ 03-5700-5330  
☎ 12:00~15:00, 17:00~21:00  
☒ Wed. ☎ 4-19-24 Kugahara, Ota-ku

### H. Tonkatsu Aoki

P22 B-2

☎ 03-3739-4231 ☎ 11:00~14:00, 17:00~21:00  
☒ Mon., Sun.  
☒ Royal Heights Kamata 102, 5-43-7 Kamata, Ota-ku

### I. Tonkatsu Tatsumi

P22 B-1

☎ 03-3731-3216  
☎ 11:30~14:30, 17:30~21:00  
☒ Sun. ☒ Lumiere Hikari 1F, 7-48-8 Nishi-Kamata, Ota-ku

A fried pork cutlet recipe introduced to Japan during the Meiji era. This delicious combination of crispy batter and full-bodied sauce is a staple of Japanese home cooking.

## Ramen

### A. Niboshi Tsukemen Miyamoto

P22 B-1

☎ 03-5703-0213  
☎ 11:00~15:00, 18:00~21:00  
☒ Wed. ☎ 7-8-1 Nishi-Kamata, Ota-ku

### B. Yoneya

P24 A

☎ 03-3751-3050  
☎ 11:00~14:00, 17:00~22:00  
☒ Mon. ☎ 3-35-7 Ikegami, Ota-ku

### C. Wafu Ramen Watetsu

P22 B-1

☎ 03-5703-5021 ☎ 11:00-25:30  
☒ Open year round ☒ Dai 25 Tokyo Building 1F,  
5-19-1 Kamata, Ota-ku

## Unaju

### D. Suzuki Kabayaki

P22 A-1

☎ 11:30-20:30 (last order)  
☒ Tue.  
☒ 7-63-2 Nishi-Kamata, Ota-ku

### E. Unagi Wakamatsu

P23 D-2

☎ 03-3734-8620  
☎ 11:00~14:00, 17:00~21:00  
☒ Tue. ☎ 1-22-6 Minami-Kamata, Ota-ku

### F. Hasegawa

P24 G

☎ 03-3761-5282  
☎ 11:30~14:00, 17:00~20:30 (last order)  
☒ Wed. ☎ 2-4-4 Omori-Nishi, Ota-ku

## Hanetsuki gyoza

### J. Hoan Yon

P22 B-2

☎ 03-3730-7811  
☎ 11:30-14:00, 17:00-22:30 (last order)  
☒ New Year Holidays ☎ 5-13-26 Kamata, Ota-ku

### K. Konparu Honkan

P23 C-2

☎ 03-3737-5841 ☎ 11:30~23:00  
☒ Open year round  
☒ Prosperia Building 1F/2F, 4-5-6 Kamata, Ota-ku

### L. Ni Hao Annex

P23 C-2

☎ 03-3734-2180 ☎ 11:30~14:00, 17:00~23:30  
☒ Sun./holiday L.O. 22:00 ☒ New Year holidays  
☒ Hanesamu Building B1F, 4-25-7 Kamata, Ota-ku

## Japanese cuisine

### M. Tenpura Tenmi

P22 B-1

☎ 03-3733-8960 ☎ 11:30-14:00, 17:00-22:00  
(until 21:30 on Sun./holidays) ☒ Mon.  
☒ Maison Astoria 1F, 7-32-3 Nishi-Kamata, Ota-ku

### N. Takasago Sushi

P24 D

☎ 03-3729-0842  
☎ 11:00~14:00, 17:00~22:00  
☒ Tue. ☎ 5-9-2 Higashi-Yukigaya, Ota-ku

### O. Senryu

P24 F

☎ 03-3766-3775 ☎ 11:30-14:00, 17:00-20:00  
(Lunch only on Sat)  
☒ Sun./holidays  
☒ 4-12-23 Omori-Kita, Ota-ku



Ota City  
Sweets and café

**A** Patisserie Naohira's  
pudding à la mode

Custard pudding topped  
high with seasonal fruits.

- ☎ 03-6424-5033
- 🕒 10:00-20:00
- ✖ No regular holidays
- 📍 TAC Building 1F, 2-18-22 Kamata, Ota-ku

**P23 C-1**

**B** Marshmallow Monster's  
animal cakes

A range of cut mini-cakes are available,  
including cakes in the shape of their  
mascot character 'Marsh-mon.'

- ☎ 03-3298-7654
- 🕒 10:00-20:00
- ✖ Mon. (open on Mon. if a national holiday)
- 📍 3-7-26 Omori-Nishi, Ota-ku

**P24 G**

**C** Wagashi Kiyono's  
seasonal nerikiri

Nerikiri (Chinese yam kneaded into white bean  
jam and colored with natural ingredients),  
shaped into flowers and other seasonal items.

- ☎ 03-3731-2320
- 🕒 10:00-19:30 (holidays: until 18:00)
- ✖ Wed./Sun, no regular holidays
- 📍 1-7-5 Kamata-Honcho, Ota-ku

**P22 B-2**



B



**D** wagashi asobi's dried fruits  
in jellied azuki bean

Fragrant, faintly sweet jellied  
azuki bean, strewn with dried  
strawberries, figs and walnuts

- ☎ 03-3748-3539
- 🕒 10:00-17:00
- ✖ No regular holidays
- 📍 1-31-1-101 Kamiikedai, Ota-ku

**P24 C**

**E** Mochijin's  
abekawa mochi

An usual take on abekawa mochi,  
with generous chunks of mochi  
bathed in roasted soybean flour  
and molasses.

- ☎ 03-3761-6196
- 🕒 8:30-19:00
- ✖ Tue.
- 📍 1-4-3 Omori-Higashi, Ota-ku

**P24 G**

E



©MIHO

Relaxed  
café time

Folk house café  
Rengetsu **P24 A**

This folk house café is housed in  
a renovated soba shop originally  
built in 1933. A visit feels like a  
trip into the golden days of the  
Showa era. In addition to regular  
meals, the café also feature a full  
casual desert menu including  
cakes and hojicha tea pudding.

- ☎ 03-6410-5469
- 🕒 10:00-22:00 (L.O. 21:30)
- ✖ No regular holidays
- 📍 2-20-11 Ikegami, Ota-ku



Stop by on  
your way to  
Honmonji  
Temple



L'ëpi D'or **P24 B**

A favorite pastry shop among  
locals for over 40 years, L'ëpi  
D'or offers original seasonal  
cakes and cookies and relies on  
only the freshest of ingredi-  
ents. Enjoy the view from the  
large window in the second  
floor tea room while partaking  
in seasonal sweets.

- ☎ 03-3722-0141
- 🕒 9:00-19:00 (tea room: 9:30-18:30)
- ✖ Wed.
- 📍 3-24-14 Den-enchofu, Ota-ku



Located next to  
an avenue of ginkgo  
trees that are  
especially beautiful  
in autumn







癒

TOKYO  
OTA  
CITY  
GUIDE BOOK

Wash away the fatigue of your trip

## Bathhouses/ hot springs

Price  
¥460

(As of March 2017.)



B

## Enjoy the beautiful bathhouse murals

### A. Teruno-yu

☎ 03-3739-5527  
🕒 15:00~23:30  
Sat., Sun., holidays: 10:00-23:30  
✖ Thu.  
📍 3-23-6 Naka-Rokugo, Ota-ku

### B. Hasunuma Onsen

☎ 03-3734-0081  
🕒 15:00~25:00  
✖ Tue.  
📍 6-16-11 Nishi-Kamata, Ota-ku

## A beauty hot springs with pitch-black waters? Kuroyu

A natural kuroyu (black water hot spring) runs through Ota City. The waters can be enjoyed at some bath houses in the city. These waters, which are black due to the presence of ancient carbonized vegetation, are rare throughout the world, and are said to have a beautifying effect on the skin.

Rules for using a  
Japanese bathhouse



## Goldfish and black water!

Immerse yourself in the  
kuroyu while viewing  
the large goldfish tank

### C. Kaisei-yu

☎ 03-3731-7078  
🕒 15:00~24:30  
✖ Fri.  
📍 5-10-5 Nishi-Kamata, Ota-ku



C

## Beautiful shrine-like architecture

Shrine-style architecture refers to buildings built  
in the style of temples and shrines.

### D. Tamano-yu

☎ 03-3741-2503 🕒 15:15~23:20  
✖ Thu. 📍 5-19-13 Haneda, Ota-ku

### E. Myojin-yu

☎ 03-3729-2526 🕒 16:00~23:00  
✖ The 5th, 15th and 25th of every month  
(or following day if a Sun. or national holiday)  
📍 5-14-7 Minami-Yukigaya, Ota-ku



F

## Relax further after exiting the baths

Complete with karaoke, dining and other facilities.

### F. Sakura-kan

☎ 03-3754-2637  
🕒 12:00-25:00; Sat./Sun./holidays: 10:00-25:00  
✖ Open Year round 📍 6-35-5 Ikegami, Ota-ku

E

## Outdoor bath

### G. Daini-Hinode-yu

☎ 03-3731-7761  
🕒 15:00~23:30  
✖ Wed.  
📍 6-5-17 Nishi-Kamata, Ota-ku



G



Check here to learn more  
about Japanese bathhouses!

大田浴場連合会  
Ota Sento Association



Close to  
Haneda Airport,  
with a special late-night/  
early morning  
send-off brunch  
(reservations required).



## Natural Hot Spring Heiwajima

Tokyo's foremost natural hot spring, the  
muriated spring waters are particularly known  
for their moisturizing effect. A variety of baths  
are available, including jet and sauna baths.

☎ 03-3768-9121 🕒 Weekdays: ¥1,800;  
Holidays: ¥2,100 (7 hrs or less)  
🕒 Open 24 hours ✖ Open Year round  
📍 Keikyu Heiwajima Station or  
One-Coin Bus from JR Omori Station  
📍 Bigfun Heiwajima Building B 2F,  
1-1-1 Heiwajima, Ota-ku



# TOKYO OTA CITY GUIDE BOOK

和

Experience traditional Japanese harmony

## Japanese Experiences



### Ota City D-4 Tourist Information Center

As a visitors center located in a bustling urban neighborhood, the Ota City Tourist Information Center offers a variety of hands-on cultural experiences rooted in the local area. Ota City offers new discoveries with each visit, which can easily become the highlight of your trip.

☎ 03-6424-7288 🕒 9:00-21:00 🔄 Open Year round  
📍 Wing Kitchen Keikyu Kamata M2F  
4-50-11 Kamata, Ota-ku

Reservations for cultural workshops can be made here



**OTA CITY**  
Discover authentic Japan



### Paid workshops



### Sado Japanese Tea Ceremony

A tea ceremony is a form of hospitality steeped in traditional etiquette, during which guests are presented with tea. Enjoy a peaceful moment of tea, as well as a delicious accompaniment of Japanese sweets, in an authentic Japanese tatami room.

Time: Approx. 60 minutes  
Price: ¥3,500  
Hours: 10:00-18:00  
Reservations: Required



### Kimono Experience

Colorful traditional and long-sleeved kimonos are available, allowing guests to dress in their choice of stunning Japanese garb. Children's sizes are also available.

#### Dress-up only course

60 minute course, guests dress up inside the center and do not go outside.  
Time: Approx. 60 min./Price: ¥3,500  
Hours: 10:00-18:00/Reservations: Required

#### Shrine visit course

90 minute course (until return to center), with a visit to a nearby shrine.  
Time: Approx. 90 min./Price: ¥4,500  
Hours: 10:00-18:00/Reservations: Required

**Kado Japanese Flower Arrangement** Arrange seasonal plants and flowers in vases, to appreciate their beauty.

**Manga workshop** Experience some of the steps involved in creating manga.

**Shodo Japanese Calligraphy** Try your hand at using brush and ink to write beautiful characters.

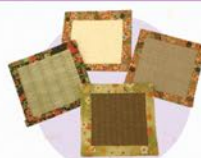
### Free workshops

**Origami** Create a variety of intriguing shapes by folding a single square of paper.

**Hand-made Japanese accessories** Make tatami coasters, bookmarks, paper cut stencils and more.

**Traditional Japanese games** Experience traditional games handed down through Japanese history.

**Free memorial photographs** Drape a kimono over your clothes and take a memorial photograph.



Tatami coaster



Cut stencil



Bookmark

### Buy it here! Ota City souvenirs



### Kamata Kiriko

Glass items repeatedly hand-shaved and polished, by skilled artisans, to create complicated, intricate designs.



### Haneda Daiko

A dorayaki (sponge cake and bean paste sandwich) made with whole chestnuts. Both red and white bean paste varieties are available.



### Ayu Castella/Doll Cakes

The doll cakes are made with mildly sweet bean paste inside fluffy castella sponge cake. The Ayu (sweetfish) castella are fluffy sponge cake shaped like sweetfish, without the bean paste.



### Saké

A pure ginjo saké created by the long-running saké brewery Toshimaya in Higashimurayama, Tokyo, and available only at Haneda Airport. A clear and polished vintage, with an invigorating flavor and fragrance that utilizes the deep richness of fermented rice grain.



### Kawase Hasui merchandise

Hasui Kawase was a woodblock artist who lived in Ota City and who was active from the Taisho period into the Showa period. He traveled throughout Japan and left behind many memorable prints. Kawase Hasui merchandise, such as file sleeves printed with some of his most famous works, is available for purchase.



### Ota City official PR character Hanepyon merchandise

Stuffed animals, pin badges, mini towels, notepads and neckties are all available.



## Authentic Japan

One day itinerary  
through Ota city Tokyo1. Haneda Airport  
P4-5Where the majority of  
people visiting Ota City  
first set foot.

Departure

Walking  
plan2. Anamori Inari-jinja Shrine  
P8Originally located where  
the Haneda Airport  
currently sits, this shrine  
was relocated during  
construction of the airport.

5 min.

3. Ota City Tourist  
Information Center  
P18The kimono trying-on  
center offers a popular and amazing  
experience.Kimono  
trying-onWinged  
gyoza  
dumplings  
for lunch4. Ni Hao  
P13The Kamata area is  
famous for its 'winged'  
gyoza dumplings.

13 min.

Walking  
plan5. Senzokuike Pond  
P9A beautiful place for  
a walk, and great for  
pleasure boat rides  
as well (30 min.,  
¥800).

10 min.

Short  
break7. Folk house  
Café Rengetsu  
P15A café set in a traditional  
Japanese folk house.  
A Japanese garden is  
located in the rear.

5 min.

Walking  
plan6. Ikegami  
Honmonji Temple  
P6-7While not as famous as  
Sensoji Temple, it offers  
a more quiet and sacred  
atmosphere.

20 min.

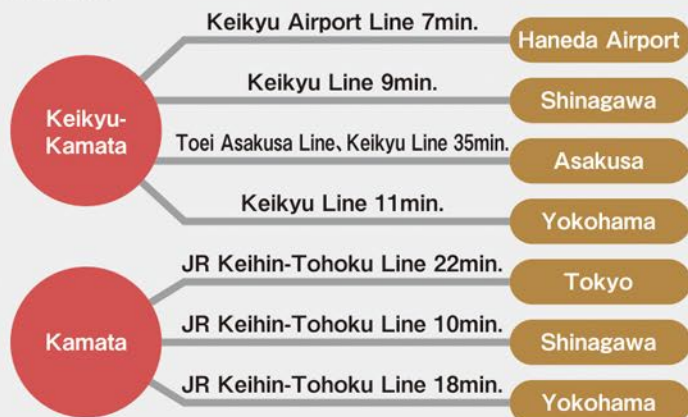
8. Daini-Hinode-yu  
P17The black spa water is  
believed to have  
healing and beautifying  
properties. The  
bathhouse wall mural  
should not be missed.

10 min.

Outdoor  
black-water  
spa9. Bourbon Road  
P11The perfect place for  
dinner or drinks.  
There's something  
nostalgic about  
Bourbon Road.Dinner  
at an  
IzakayaFor  
course details  
see here



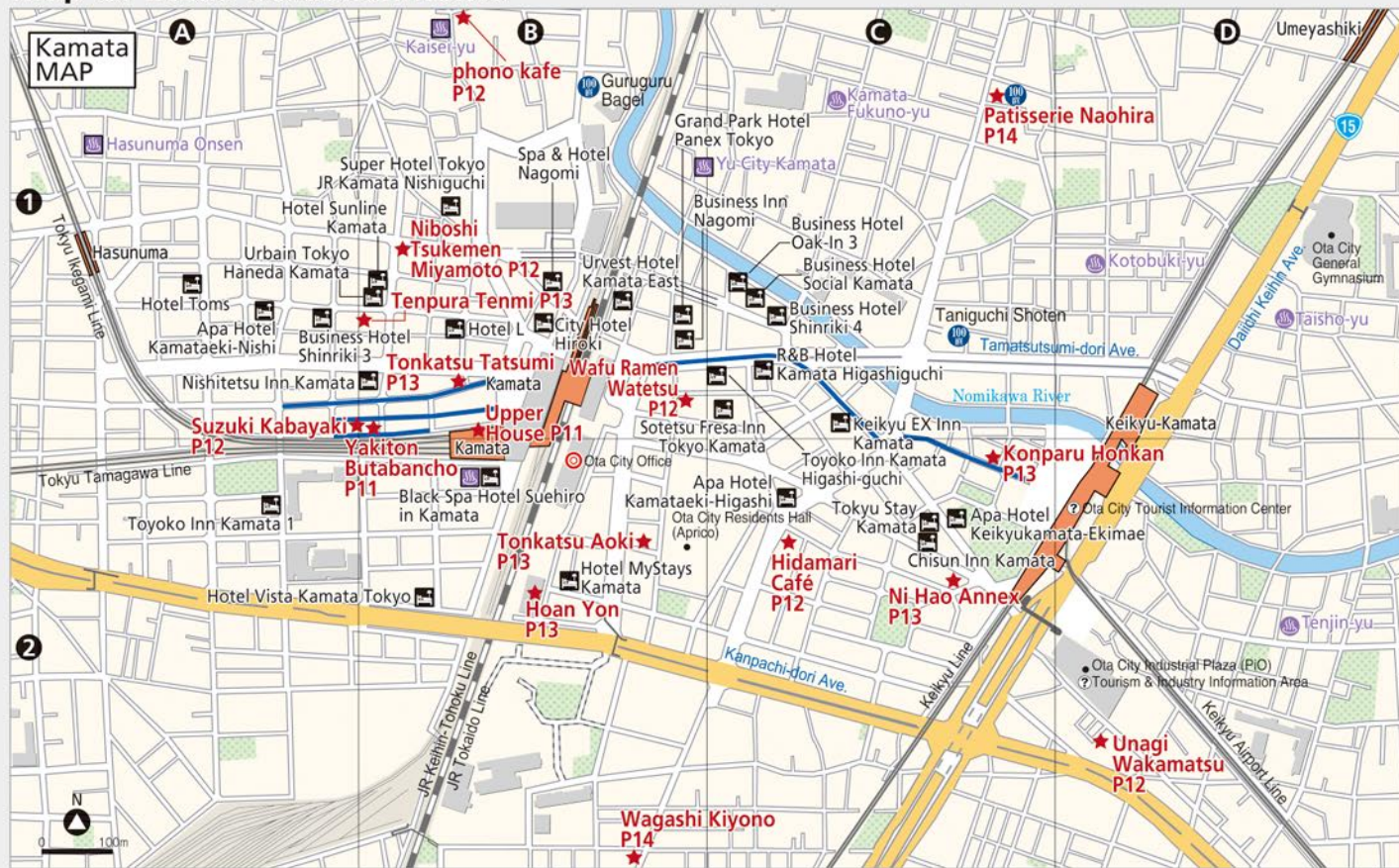
## Access from Ota City



## Ota City Access Map

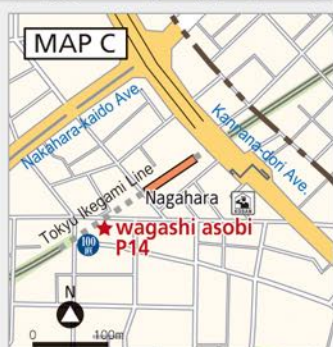


## Map of listed establishments





## Map of listed establishments



MORE!

## Ota City Tourism Information

### Event calendar

Date	Event	Place
2nd Sun. of Jan.	Tonbi kite flying	Tamagawa riverbed
2nd Sun. of Jan.	New Years bonfire	Tamagawa Rokugo Bridge green belt
Feb. 3	Setsubun	Temples and shrines etc. throughout Ota City
Sun. in early Apr.	Magome Bunshimura Cherry Blossom Festival	Magome Sakura Namiki (cherry blossom blvd)
Apr. 21	Negi-no-mai	Tenso-jinja Shrine
May 11	Water god festival	Sui-jinja Shrine
Mid May	Spring night concert	Senzokuike Pond Park, Ikezuki Bridge
Late Jun.	Chinowa-kuguri	Yukigaya Hachiman-jinja Shrine and other shrines in Ota City
Jul. 14	Mizudome-no-mai	Gonsho-ji Temple
Jul. 16	Senzoku Pond lantern floating	Myofuku-ji Temple
Sat./Sun. in late Jul.	National Unoki Festival	Shopping street near Unoki Station
Late Jul.	Haneda-jinja Shrine Summer Festival	Haneda-jinja Shrine
Oct. 11-13	Oeshiki	Ikegami Honmonji Temple
Early to mid Nov.	Chrysanthemum exhibit	Ikegami Baien (Plum garden)

A variety of pamphlets and other information is available to help you make the most of your time in Ota City.

### Ota Tourist Association

ADDRESS Ota City Industrial Plaza (PIO) 1-20-20 Minami-Kamata, Ota-ku  
TEL 03-3734-0202

### Haneda Airport International Terminal Ota City Tourist Information Area

ADDRESS 2-6-5 Haneda-Kuko, Ota-ku  
ADDRESS Haneda Airport International Terminal  
Inside Tourist Information Center in 2F Arrivals Lobby  
OPEN 24HR

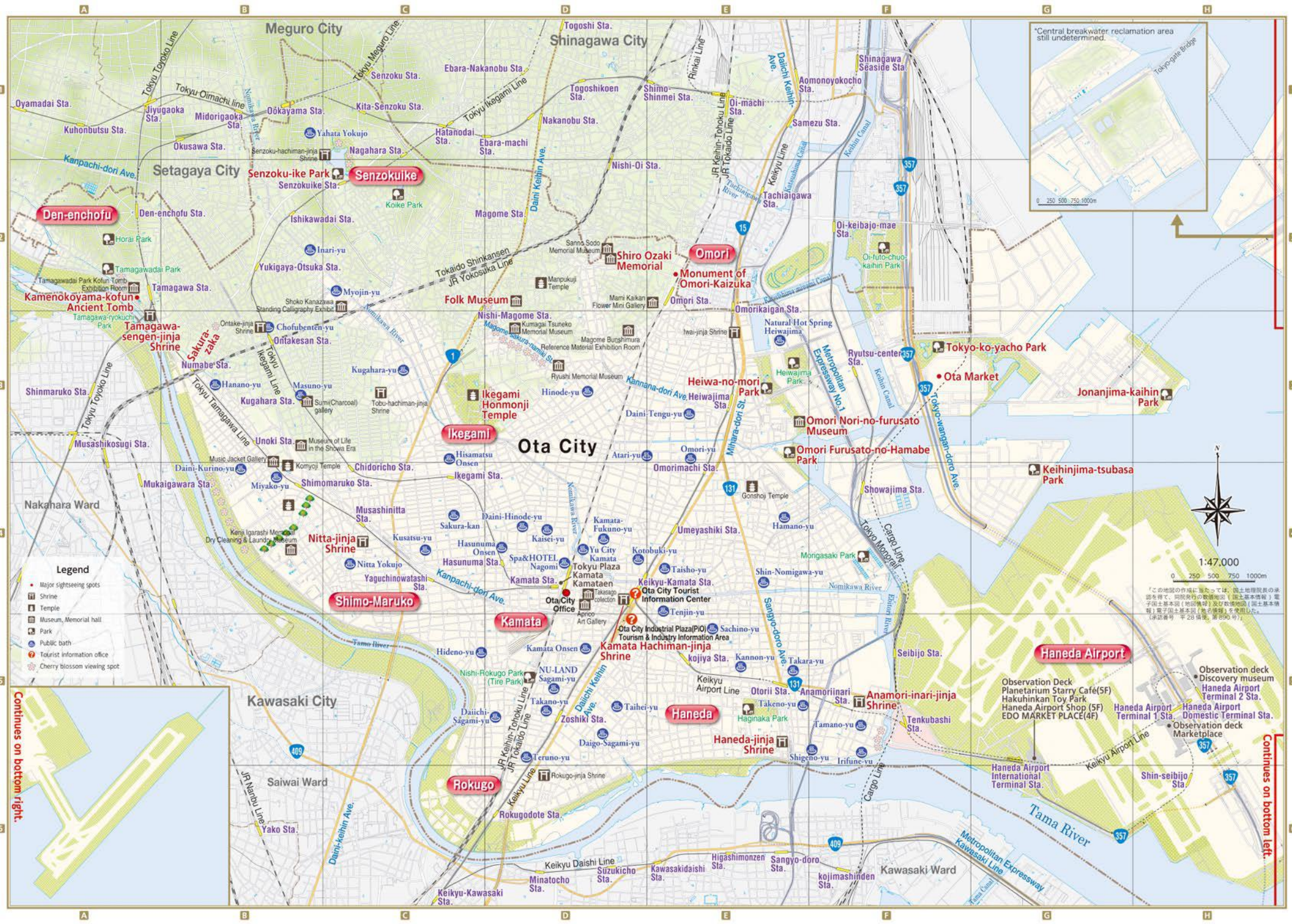


### Keikyu Line Shinagawa Station Ota City Tourist Information Area

ADDRESS 3-26-26 Takanawa, Minato-ku  
ADDRESS Outbound platform of Keikyu Shinagawa Station  
Weekdays: 10:00 am to 8:00 pm  
Sat./Sun./holidays: 10:00 am to 6:00 pm  
Closed: Dec. 30 to Jan. 3







Continues on bottom right.

Continues on bottom left.



1:47,000  
0 250 500 750 1000m

「この地図の作成に当たっては、国土地理院の承認を得て、同院発行の地図データ（国土地理院）電子版（国土地理院）及び国土地理院（国土地理院）電子版（国土地理院）を使用した。（承認番号 平 28 第 1 号）」